



Colonel Light Gardens Primary School NEWSLETTER

WINDSOR AVENUE, COLONEL LIGHT GARDENS, SA. 5041 P: (08) 8276 1523 F: (08) 8374 1038



1st FEBRUARY 2018

ISSUE: Term 1, Week 1

CLGPS WELCOMES OUR 2018 RECEPTION STUDENTS



ROOM 01



ROOM 02



ROOM 03



ROOM 04



Government of South Australia

Department for Education and
Child Development

CRICOS Provider Number 0018A

PRINCIPAL: Rick Bennallack
ASSISTANT PRINCIPAL: Penny Rowe
ASSISTANT PRINCIPAL: Ashley Blight
ASSISTANT PRINCIPAL: Jodie Cunningham

PRINCIPAL'S NEWS

WHAT'S INSIDE

COVER - **WELCOMING NEW STUDENTS**

PG 2 - **PRINCIPAL'S NEWS**

PG 3 - **PRINCIPAL'S NEWS Cont..
UNLEY HIGH OPEN DAY
STAFF / LEADERSHIP LIST**

PG 4 - **STAFF LIST Cont..
LIBRARY BLOG**

PG 5 - **STAFF LIST Cont..**

PG 6 - **ORIENTEERING NEWS
2018-2020 TERM DATES
CANTEEN NEWS**

PG 7 - **FINANCE NEWS**

PG 8 - **OSHC NEWS
COMMUNITY NEWS**

PG 9 - **COMMUNITY NEWS Cont..**

DIARY DATES

- 02/02/18 - **WHOLE SCHOOL ASSEMBLY**
12:20pm
- 05/02/18 - **CANTEEN COMMITTEE**
MEETING 2:30pm
- 08/02/18 - **RAA STREET SMART PROGRAM**
YEAR 3 CLASSES
- 08/02/18 - **YEAR 6 / 7 AQUATICS**
- 09/02/18 - **YEAR 6 / 7 AQUATICS**
- 09/02/18 - **R - 2 ASSEMBLY** 11:20am
3 - 7 ASSEMBLY 12:20pm
- 12/02/18 - **ACQUAINTANCE NIGHT** 6:00pm
(RMs: 01, 02, 03, 04, 22, 23, 24, 11, 12, 13, 14, 15)
- 13/02/18 - **ACQUAINTANCE NIGHT** 6:00pm
(RMs: 16, 17, 18, 19, 20, 21, 8, 9, 1, 2, 3, 4)
- 15/02/18 - **FINANCE COMMITTEE**
MEETING 5:30pm
- 16/02/18 - **PUPIL FREE DAY**
- 23/02/18 - **R - 2 ASSEMBLY** 11:20am
3 - 7 ASSEMBLY 12:20pm
- 23/02/18 - **R - 2 ASSEMBLY** 11:20am
3 - 7 ASSEMBLY 12:20pm
- 23/02/18 - **SCHOOL TOUR** 9:30am
- 26/02/18 - **OSHC COMMITTEE MEETING**
6:30pm
- 02/03/18 - **FAMILY PICNIC**
4:30pm - 8:00pm
- 05/03/18 - **EDUCATION COMMITTEE**
MEETING 7:00pm
- 23/02/18 - **SCHOOL TOUR** 12:00pm

Dear Parents, carers, students and community friends,

2018 BEGINS

I hope you have all had a relaxing and refreshing break as we begin another busy school year. I am pleased to report a really positive start when students returned to school on Monday including our new Reception students. I think we had more tears from the parents than we had from students. All classes seemed very settled.

It has been a busy few weeks making sure the Reade building was completed on time. It is still not 100% finished, however the teachers have done an amazing job in being ready for day 1. It is now a lovely new space to learn.

We are starting the year with **678** students in **25** classes. I would like to especially welcome the following **90** new Reception and **21** other students transferring from other public and private schools to Colonel Light Gardens.

Starting their Reception year at school, we welcome:

Aidan, Aki, Alex, Alia, Amelie M, Amelie, Arthur, Audrey, Braxton, Caleigh, Charlotte R, Charlotte T, Chester, Chloe H, Chloe, Claire, Eadie, Edward, Eli, Eliza T, Eliza V, Ella L, Ella V, Emi, Ethan D, Ethan S, Ewan, Finn, Frankie, Grace, Halle, Hanan, Harry S, Harry V, Henry, Hunter, Isaac, Ivy, Jack, Jeremy, Joshua, Kelsie-Marie, Khoi An, Kiaan, Kiana, Lee, Leo, Liam, Lilly, Lily, Louis, Luke, Lydia, Madeleine, Maggie, Maliah, Matthew, Max L, Max P, Maya B, Maya P, McKenzie, Mia, Mickey, Millicent, Mitchell, Muhaimin, Nathan, Nathaniel, Nikita, Noah G, Noah K, Nusaiba, Olivia C, Olivia U, Ollie G, Ollie H, Patrick, Ruby, Sam, Serah, Shiloh, Tegan, Thomas, Zainab, Zara, Xavier and Zenith.

Transferring from other schools:

- In Year 1 we welcome:
Isla, Kurt, Manuela and Nhat
- In Year 2 we welcome:
Charlotte, Ella, Exavier, Gene and Jasmine
- In Year 3 we welcome:
Indie and Oliver
- In Year 4 we welcome:
Jackson, Lola, Milo and Riley
- In Year 5 we welcome:
Jun, Lachy and Roxy
- In Year 6 we welcome:
Angus and Gabriel
- In Year 7 we welcome:
Jasmian

Although these 111 students are new to the Colonel Light Gardens Primary School, many are not new to the CLG community as they have older siblings in the school. I look forward to working together in partnership with all of our families to make the schooling experience for every child positive and productive. Together we can achieve great things.

PRINCIPAL'S NEWS Cont...

NEW STAFF

The new year often brings changes in staff. I am really pleased to welcome the following new staff members to CLG. We will be doing a profile on each of the new staff members in the upcoming weeks. In alphabetical order:

- **Katina Athanasos** from Seaford Rise Primary School teaching year 3/4 in room 18
- **Rachael Craig** from Rose Park Primary School teaching year 5/6 in room 9
- **Tyson Lack** as an IT technician most recently from Goodwood Primary School
- **Belle Maduro** from Coober Pedy Area School teaching year 5/6 in room 8
- **Briana Rea** from North Adelaide Primary School teaching year 4/5 in room 21
- **Emma Pressley** from Flagstaff Hill Primary School sharing teaching roles across the year 1 cohort in Rooms 22, 23 and 24
- **Penny Rowe** as an Assistant Principal coming from the Victorian Education Department

I would also like to welcome back **Kat Butler** and **Meagan Fitzpatrick** returning from parenting leave, **Tamra Waye** from her Canadian teaching exchange and **Sue Speechley**, who joins us for two days per week.

ACQUAINTANCE NIGHT – CHANGE OF DATES

In the welcome letter I sent out a couple of weeks ago with the school fee invoices, I outlined a number of important dates. Please note that our **Acquaintance Night** will now be held over 2 nights. The revised dates are **Monday 12th February** from 6:00pm for the junior primary classes and **Tuesday 13th February** from 6:00pm for the primary classes. Please see Diary Dates on page two to find which day your child's/children's roll classes have been allotted to. A letter with all the information and times for the different classes was also sent home through classrooms today.

Kind regards




Rick Bennallack

Principal

0412 261 231

rick.bennallack149@schools.sa.edu.au

UNLEY HIGH SCHOOL - OPEN DAY / PRINCIPAL TOUR

 <p>101 Kitchener Street, Netherby SA. 8394 5400 info@uhs.sa.edu.au www.uhs.sa.edu.au</p>  <p>Government of South Australia Department for Education and Child Development</p>	 <p style="text-align: center;">UNLEY HIGH SCHOOL EXCELLENCE RESPECT DIVERSITY COMMUNITY</p>	<p style="text-align: center;">2018 OPEN EVENING 6.00pm - 8.00pm</p> <p style="text-align: center;">Principal's address - 6.10pm Tours commence at 6.30pm</p> <p style="text-align: center;">2018 PRINCIPAL'S TOUR 9.00am - 10.30am</p> <p style="text-align: center;">Bookings essential for Principal's Tours Register at: tours@uhs.sa.edu.au 101 Kitchener Street, Netherby SA. 8394 5400 info@uhs.sa.edu.au www.uhs.sa.edu.au</p>
---------------------------------------------------------------------------------------------------------------------------------------------------------------------------------------------------------------------------------------------------------------------------------------------------------------------------------------------------------------------------------------------------------------------------------------------------------	--------------------------------------------------------------------------------------------------------------------------------------------------------------------------------------------------	--------------------------------------------------------------------------------------------------------------------------------------------------------------------------------------------------------------------------------------------------------------------------------------------------------------------------------------------------------------------------------------------------------------------------------------------------------------------------------------------------------------------------------------------------------------------------------------------------------

2018 STAFF LIST

LEADERSHIP

Principal	Rick Bennallack	Admin Office
Assistant Principal	Ashley Blight (Teaching – Wed)	Admin Office
Assistant Principal	Jodie Cunningham	Admin Office
Assistant Principal	Penny Rowe (Mon, Tues, Thurs, Fri)	Admin Office

2018 STAFF LIST Cont..

CLASSROOM TEACHER / S

1.	Rec	Veronica Scicchitano	Room 01
2.	Rec	Sarah Grant	Room 02
3.	Rec	Stephanie Coutts	Room 03
4.	Rec	Gabby De Pierro (Mon, Tues, Thurs, Fri) / Sue Speechley (Wed)	Room 04
5.	Yr 1	Marie Pytharoulis (Mon, Wed, Thurs, Fri) / Emma Pressley (Tues)	Room 22
6.	Yr 1	Rachel Palmer (Mon, Tues, Wed, Fri) / Emma Pressley (Thurs)	Room 23
7.	Yr 1	Nancy Elder (Mon to Thurs) / Emma Pressley (Fri)	Room 24
8.	Yr 1	Karen Hawkes	Room 25
9.	Yr 2	Bianca Radovanovic (Mon, Tues, Wed) / Renae Simmons (Thurs, Fri)	Room 11
10.	Yr 2	Kathy Ellidge	Room 12
11.	Yr 2/3	Becky Cassin (Mon, Tues, Wed) / Kat Butler (Thurs, Fri)	Room 13
12.	Yr 2/3	Tamra Waye (Mon, Wed, Thurs, Fri) / Sue Speechley (Tues)	Room 14
13.	Yr 2/3	Erin Chambers	Room 15
14.	Yr 3/4	Krista Gill (Mon, Tues, Wed) / Suzy Matthews (Thurs, Fri)	Room 17
15.	Yr 3/4	Katina Athanasos	Room 18
16.	Yr 4	Des Norman (Mon, Tues, Thurs, Fri) / Suzy Matthews (Wed)	Room 16
17.	Yr 4/5	Heather Frances	Room 19
18.	Yr 4/5	Kate McSkimming (Mon, Tues, Thurs, Fri) / Ashley Blight (Wed)	Room 20
19.	Yr 4/5	Briana Rea	Room 21
20.	Yr 5/6	Belle Maduro	Room 8
21.	Yr 5/6	Rachael Craig	Room 9
22.	Yr 6/7	Glenda Weaver	Room 1
23.	Yr 6/7	Jess Roberts	Room 2
24.	Yr 6/7	James Simmons	Room 3
25.	Yr 6/7	Chris Braybrook	Room 4

CLG LIBRARY BLOG

READISCOVER (CLGPS Library Blog)



Subscribe to the library blog (<http://simonepercy.edublogs.org/>) to discover beautiful new books, find out about library events & initiatives, competitions, everything you need to know about the PRC – and a whole lot more!

2018 STAFF LIST Cont..

SPECIALIST TEACHERS

Aboriginal Education Teacher (AET) / Enrichment	Susan O'Connell (Tues, Thurs)	6A
English as Additional Language or Dialect (EALD)	Katina Pagonis (Mon - Wed)	15
Japanese	Juno Oka	05
Learning Support	Meagan Fitzpatrick (Tues, Thurs)	Sunny Room
Music / Dance / Drama	Marian Woodlands	6 and 7
Physical Education	Kim Boothey	Reade Office / Gym
Special Education	Kirsty Sideris (Mon - Thurs)	18A
Teacher Librarian	Simone Percy	Resource Centre
Visual Arts / Media Arts	Shane Pluck	07

SUPPORT STAFF

Business Manager	Stef Marston	Admin Office
Finance Officer / Executive Assistant	Adele Egarr	Admin Office
Admin and Finance Officer	Megan Lang	Admin Office
Admin Officer / Library Support	Tash Withers (AM - Mon, Wed, Thurs, Fri)	Admin Office
ICT Technician	Rohan Guest (Wed, Thurs)	Computer Suite
ICT Technician	Tyson Lack (Mon, AM Tues, AM Fri)	Computer Suite
Pastoral Care Worker (PCW)	Pamela Hansen (Thurs)	Reade Office
Library Support / Class Support / Intervention	Jan-Marie Shaw (part time)	Resource Centre
Class Support / Intervention	Kate Moody (part time)	SSO Room (Doolette)
Class Support / Intervention / RC / Admin	Tammy Hawrylkiw (part time)	SSO Room (Doolette)
Class Support / Intervention	Marg Lannan (part time)	SSO Room (Doolette)
Class Support / Intervention	Bev Watton (part time)	SSO Room (Doolette)
Class Support / Intervention	Laura McAvaney (part time)	SSO Room (Doolette)
Canteen Manager	Helen Parsons (until 2.00pm Mon to Fri)	Canteen
Grounds	Bruce Ford (Mon, Thurs)	Grounds shed

FUNDRAISING NEWS

FUNDRAISING ON FACEBOOK!



www.facebook.com/ColonelLightGardensPrimaryFundraisingPage

To keep up to date with 'What's happening with fundraising events', please follow the link above and like our Facebook page to receive notifications of updates and new events.

ORIENTEERING SA



The Snap Sprint Orienteering series commences this **Friday 2nd February** with an event at Adelaide University, followed by **Friday 9th February** at Mawson Lakes University, **Friday 16th February** at Lochiel Park and finally **Friday 23rd February** at Underdale. All events start at 6:00pm. As CLGPS has a membership with Orienteering SA, entry for students is free. Parents can enter also and compete or they can tag along with their child. It is preferable that they tag along with their child to begin with. Students can also do the courses as a team with siblings, as a family or with friends. To find out more please go to www.sa.orienteering.asn.au for times, fees and where to meet. You can also contact Des Norman via email on Des.Norman951@schools.sa.edu.au. The school hopes to have some students involved in the SAPSASA Individual Orienteering Event to be held later this year. Hope to see some of you out there soon.

DES NORMAN & KIM BOOTHEY

2018 - 2020 TERM CALENDAR

YEAR / TERM	TERM 1	TERM 2	TERM 3	TERM 4
2018	29 January - 13 April	30 April - 6 July	23 July - 28 September	15 October - 14 December
2019	29 January - 12 April	29 April - 5 July	22 July - 27 September	14 October - 13 December
2020	28 January - 9 April	27 April - 3 July	20 July - 25 September	12 October - 11 December



CANTEEN NEWS

COLONEL'S KITCHEN

All items have now been restocked and are ready for your ordering. **The 2017 Menu and prices** will remain current until the finance figures have been updated and reassessed for the current year. Here's hoping they don't have to increase as we achieved average annual sales of **7.9%** of students per week order. This is a great result but fell short of our goal of 15%, maybe this year!

Historically we have introduced new, different and exciting food choices and are continually searching for more appropriate items, however we always welcome and request your constant feedback and suggestions on what your children would like to see on the menu, so if you have any ideas please let us know.

Now that the hot weather is upon us please consider your daily time commitments. The children's lunchtime rush for iceblocks can be extremely demanding on my own and a 45 minute donation of your time would be really appreciated. Only from **1.00 to 1.45pm** and one time a week would be all that is required.

Online ordering proved to be the choice of popularity last year, and also indicated a marked increase in healthy salad choices. If you haven't yet considered online ordering it is well worth the effort. Although it is not for everyone, the convenience and ease of ordering is certainly beneficial. Just follow the link on the website, **place your order before 10am** for either that day, or multiple days, or specific days each week and notice the stress from the "morning lunch preparation routine" disappear.

****Please note that Jungle Curry has been discontinued.**

Helen Parsons
Canteen Manager

FINANCE NEWS



MATERIALS AND SERVICES CHARGES / PREPAID EXCURSION FEE

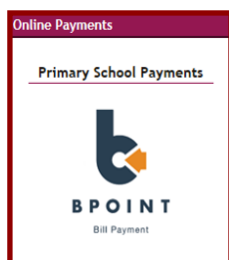
2018 Invoices were posted out to parents/ guardians in late January. The Materials and Services charge, together with grants provided by the government, is used to provide your child with access to the materials and equipment needed for a quality education program. It provides:

- stationery, art and craft materials text books, library books and teaching resources.
- equipment for physical education, science, technology and information technology, including internet access
- swimming/aquatics lessons and two other in-school performances (excluding transport) and other materials that are needed to deliver the curriculum and to ensure a safe and challenging environment

PAYMENT OF FEES

Please note: M&S fees are legally recoverable and subject to payment terms of 30 of days. Payment of M&S invoices should therefore be finalised on or before **Wednesday 28th February 2018**, unless Direct Debit agreements have been entered into or school card scheme applications submitted. The Prepaid excursion fee is not mandatory, but offered as an optional method of payment for your child/rens excursion costs throughout the year.

Payment options are:



PAYMENT IN FULL

Payment in person by cash, cheques, Visa or MasterCard. The finance office is open between 8:30 - 11:00 Monday to Friday. Payment by phone using Visa or MasterCard, Online payment with a credit card is available by going to www.colgrdnspss.sa.edu.au and selecting Parent information\Online Payments - the School Payments icon. Your family ID is at the bottom left hand corner of your invoice.

SCHOOL CARD SCHEME (Government Financial Assistance)

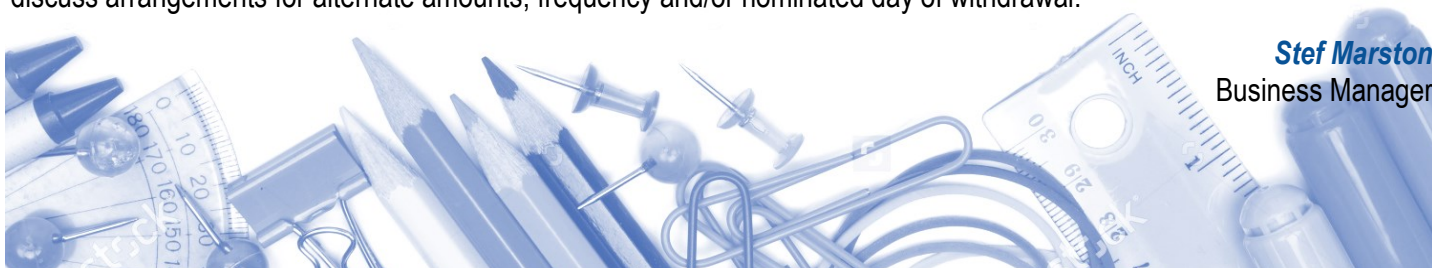
The School Card Scheme is provided and administered by DECD. Subject to eligibility criteria, the Scheme provides financial relief to low income families in relation to the cost of education expenses incurred at Government Schools. Applications for School Card in 2018 are available online and can be printed or via an online form (form A only) that can be submitted electronically:

<http://www.sa.gov.au/topics/education-and-learning/financial-help-scholarships-and-grants/school-card-scheme>

Alternatively hard copy school card forms can also be collected from the finance office at the school. Applicants need to reapply for the school card scheme every year.

DIRECT DEBIT BY INSTALMENT

Complete a Direct Debit Installment Agreement with the school that allows for 10 weekly payments of \$38.50 (M&S fees only) or \$46.00 (Combined M&S/Excursion fee) per student per fortnight to be deducted from nominated bank account starting **Friday 23rd February 2018**. The Direct Debit School Payment by Installation form is available for download on the school website (Parent information \ Online Payments) or hard copies are available from the front office. Please contact Stef Marston (Business Manager) on 8276 1523 or stef.marston918@schools.sa.edu.au to discuss arrangements for alternate amounts, frequency and/or nominated day of withdrawal.



Stef Marston
Business Manager

OSHC NEWS

OSHC PUPIL FREE DAY - Friday 16th February 2018

On Friday 16th February (Pupil Free Day) OSHC is going to Piccadilly Cinemas, 181 O'Connell Street, North Adelaide to sit back, relax and enjoy the movie Ferdinand (G). Weather permitting we will have lunch at Bonython Park. Children must be at OSHC no later than 9.00 am. We will be hiring a private bus in case of inclement weather. There are no half day bookings. Cost for the day is \$56.50 per child (normal CCB applies.) Places are strictly limited for this excursion. When booking in your child/ren for this excursion please note: once booked in if you decide to cancel, you will still be charged full fee. Cancellation on or prior to the day will incur the full fee. Staff must be given any medication (in original packaging with instructions) that their child might require during that day. All children must bring their own recess and lunch (no spending money) and wear enclosed shoes for climbing. Afternoon tea is provided. Please return booking form below to the School office or OSHC office **WITHOUT FEES** no later than 12 noon on Thursday 8th February. Any queries please ring OSHC on 82769065

✂

OSHC PUPIL FREE DAY: Piccadilly Cinemas - Friday 16th February 2018

Child/ren name/s:

Emergency contact details:

Relevant medical information:

.....
.....

COMMUNITY NEWS



Westbourne Park Uniting Church Netball Club

Winter 2018 Netball

We are currently looking for 8&u players with year of birth 2010 or 2011

and 9&u players with year of birth 2009.

No match play experience is necessary.

Matches are played on Saturday afternoons, generally 12:30 for 8&u and 9&u age group, the season commences 7/4/18.

Should your daughter or son (up to the 11&u age group) be interested in playing register on –line at www.wpucnc.org.

When nominating, players can request to be placed in the same team.

The Club also has vacancies in other age groups 11&u (2007, 2008), 13&u(2005, 2006), 15&u (2003, 2004), 17&u (2001, 2002), Opens (2000 or earlier), if interested please email Sarah at wpucnc@hotmail.com to confirm a vacancy.

ANZ Tennis Hot Shots

Tennis Australia's official kids' starter program for children aged 5-12 years
An easy transition from learning to playing **Tennis**

**Tuesday or Friday afternoons
at the**

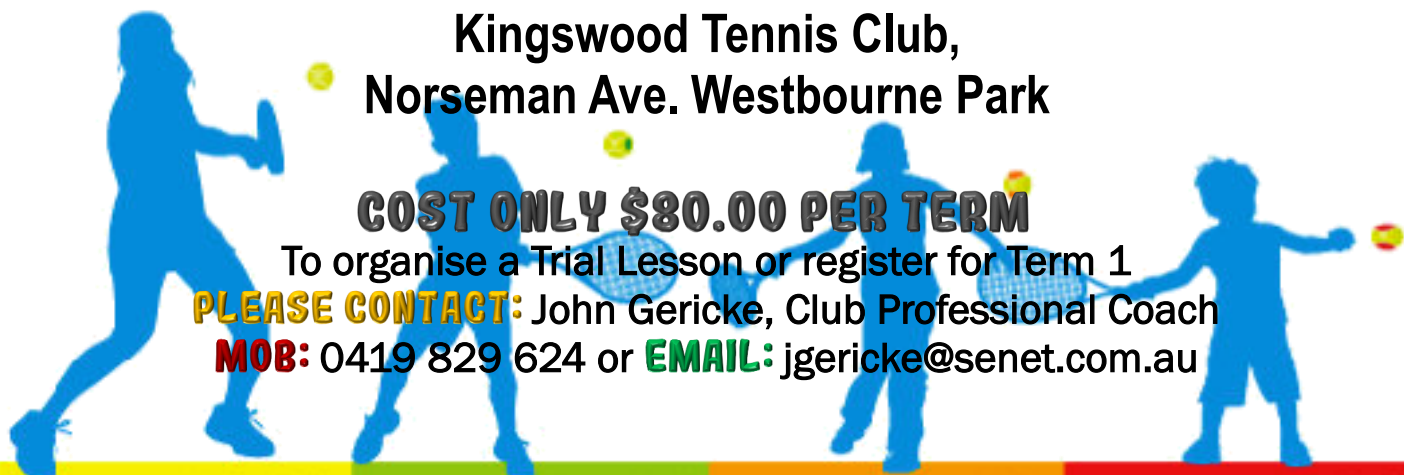
**Kingswood Tennis Club,
Norseman Ave. Westbourne Park**

COST ONLY \$80.00 PER TERM

To organise a Trial Lesson or register for Term 1

PLEASE CONTACT: John Gericke, Club Professional Coach

MOB: 0419 829 624 or **EMAIL:** jgericke@senet.com.au



Yellow ball
135-147 cm

Green ball
120-135 cm

Orange ball
105-120 cm

Red ball
85-105 cm



TENNIS COACHING

COLONEL LIGHT WEST TENNIS CLUB
Colonel Light Gardens.

0430 879 489
adelaidetennis.com.au



COLONEL LIGHT GARDENS FOOTBALL CLUB

COME AND JOIN 'THE PRIDE OF THE GARDENS' IN 2018

Colonel Light Gardens Football Club is a family friendly club that focuses on fun, participation and developing the skills of our Junior footballers.

BOYS AND GIRLS TEAMS AVAILABLE

AGE GROUPS U8s - U16.5s

AUSKICK AND MINIS (U7s) PROGRAM

* Spacious clubrooms * Kitchen and bar facilities * Accredited coaching * BBQ and canteen * Family fun days and social events



For more information head to our website www.clgfc.com.au or contact the Junior Registrar junior.registrar@clgfc.com.au

Friday February 9th

Trinity Baptist Church is hosting a



Fun for all ages, starting from 6:30pm

Free – just bring snacks to share

(and extra games if you like)

Games include – Uno, Battleship, Catan, Apples to Apples, Coup, Bounce off, Jungle speed, Scrabble, Operation, Jenga, Cranium + more

8a Bedford Square, CLG.

